



13 Shackerstone Close

Broughton, MK10 9RB

£375,000

CRANES

Welcome to this charming mid-terrace house located on Shackerstone Close in the desirable area of Broughton, Milton Keynes.

Upon entering, you will find a spacious kitchen/dining room which offer an inviting atmosphere, perfect for entertaining guests. Further on down the hallway there is a living room which is flooded with light from french doors. It offers the perfect space to wind down on an evening. A guest toilet completes the ground floor. The second floor boasts the main bedroom which also benefits from an ensuite and just down the hall is the fourth bedroom. The third floor has another two bedroom which are doubles and there is also a family bathroom completing the third floor.

The property also features a private garden and parking for one vehicle, adding to the convenience. The surrounding area is known for its friendly community and excellent local amenities, including shops, schools, and parks, all within easy reach.

- SPREAD ACROSS THREE FLOORS
- ENSUITE TO MASTER
- HIGH CEILINGS THROUGHOUT
- FOUR BEDROOMS
- ALLOCATED PARKING
- CHAIN FREE

Viewing

Please contact our Cranes Estate Agents Office on 01234 750900 if you wish to arrange a viewing appointment for this property or require further information.



4



2

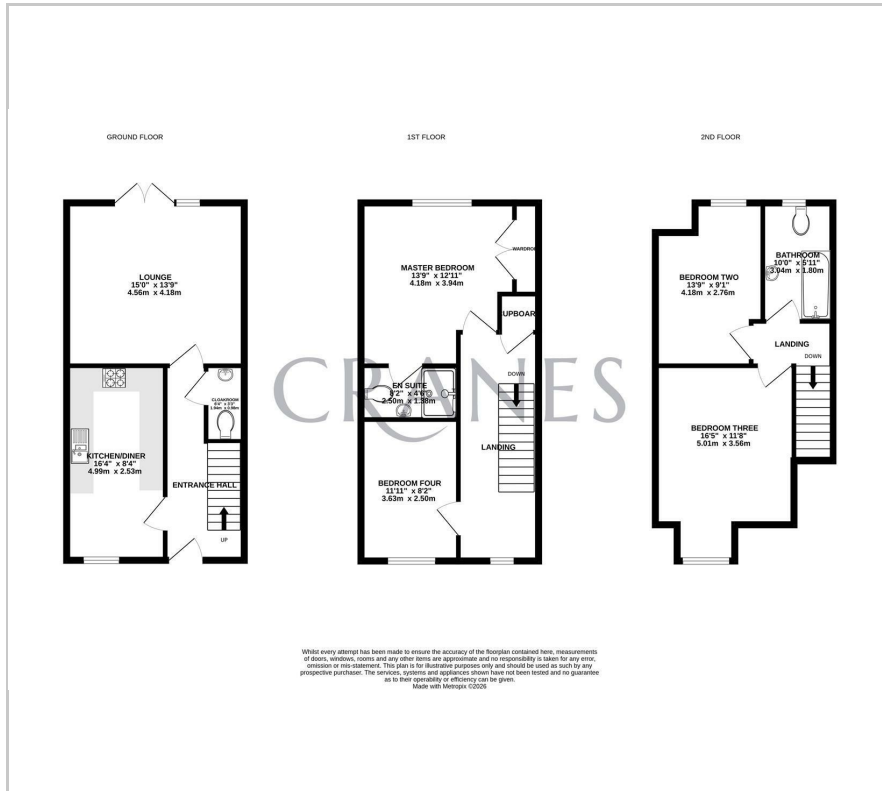


1



C

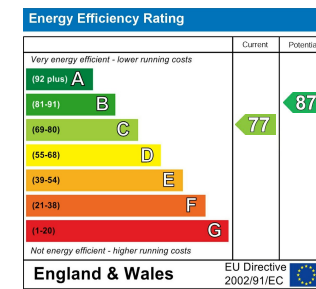
Floor Plan



Area Map



Energy Efficiency Graph



These particulars, whilst believed to be accurate are set out as a general outline only for guidance and do not constitute any part of an offer or contract. Intending purchasers should not rely on them as statements of representation of fact, but must satisfy themselves by inspection or otherwise as to their accuracy. No person in this firm's employment has the authority to make or give any representation or warranty in respect of the property.

116b High Street, Cranfield, Bedford, MK43 0DG

Tel: 01234 750900 Email: sales@cranesproperty.co.uk www.cranesproperty.co.uk